



Visibility & Collaboration Platform

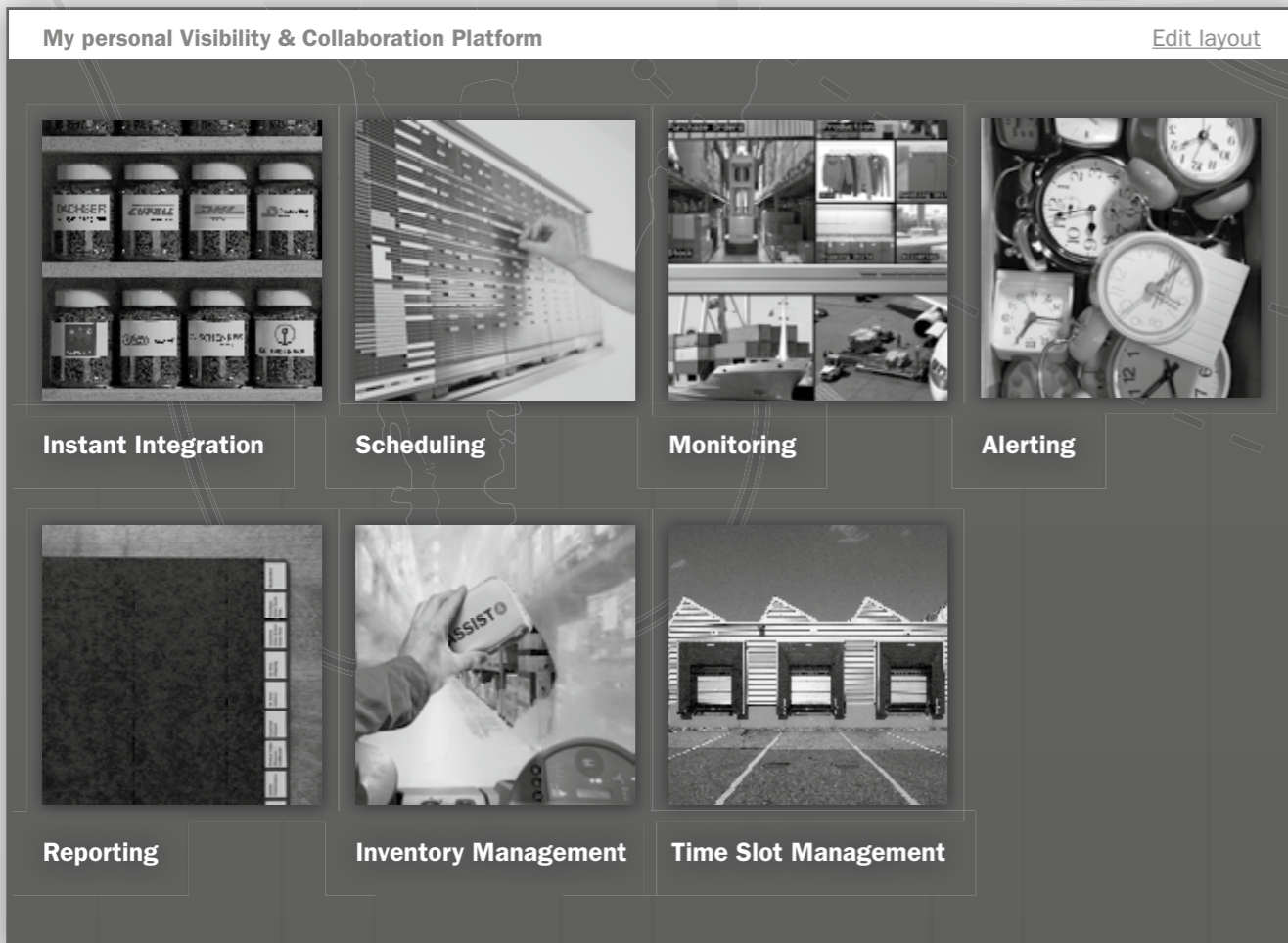
ASSIST4

Software, consultancy and services for global trade and supply chain management

AEB ■■■■

AEB's Visibility & Collaboration Platform

My personal Visibility & Collaboration Platform [Edit layout](#)



Instant Integration **Scheduling** **Monitoring** **Alerting**

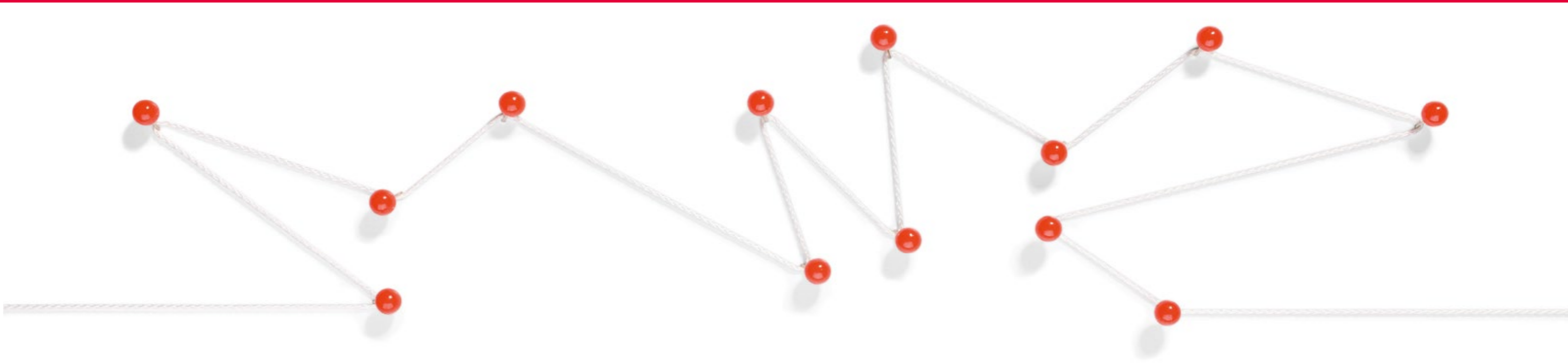
Reporting **Inventory Management** **Time Slot Management**

Many companies already have end-to-end visibility over their own production processes. But this transparency is often quickly lost as soon as outside business partners are involved. And when this transparency is lost, the capacity for action is often lost with it. AEB's Visibility & Collaboration Platform gives logistics managers flexibility by providing a uniform, transparent view of all supply chain processes coupled with effective tools to facilitate order planning and supply chain design. The visibility solution helps you track whether you're meeting your milestones: early-warning mechanisms alert you to any potential disruption – traffic jams, delays in clearing customs,

damage to merchandise during loading, quality control lapses, etc. Supply chain managers are equipped with the tools they need to be proactive and respond effectively to disruptions. A click of the mouse reveals where specific goods are in stock, how quickly replenishments might arrive, and the costs associated with a change in the mode of transport. You can configure automated notification processes so that deviations from the status chain don't hold up the supply chain. Based on KPIs, logistics managers are enabled to keep a constant eye on how the supply chain is performing and measure and evaluate internal and external processes.

Benefits of using the ASSIST4 Visibility & Collaboration Platform:

- Greater flexibility and faster response times thanks to proactive monitoring
- No more manual collection of tracking and status information
- Improved collaboration in the supply chain
- Agility through easy, out-of-the-box EDI connections to suppliers, partners, and carriers
- Optimized lead times
- Accelerated process innovations
- Optimal use of employee resources through transparency
- Transparency of service quality and adherence to delivery schedules
- Increased reliability of processes



— Visibility & Collaboration: sharing the big picture for an optimized supply chain

Supply chain managers face the challenges of increasing complexity, rising volatility, and growing risks. Staying a step ahead of the competition means optimally integrating your supply chain partners into your processes and providing the necessary transparency.

Enterprise supply chains are growing more complex and international. Having customers or suppliers in Asia, the US, or Latin America is becoming the norm for medium-sized businesses – not to mention large enterprises. And as global distribution grows, so does the number of supply chain partners. Add to the mix new distribution channels and ever-changing product lines. Businesses also expect more and more from their supply chains, calling for minimal inventories with maximized availability.

Growing risks ...

One result of all this is an escalation of supply chain risks. Whether it's everyday incidents like traffic jams and delays at the border or extraordinary events

like pirates capturing a ship or a tornado cutting off a rail line – low inventory levels and increased interdependencies mean that when disruptions do occur, the consequences are often dramatic.

And the likelihood of such incidents occurring is not low, as a new study by the supply chain researchers at the Aberdeen Group shows. More than 80 percent of supply chain managers surveyed reported that their company had dealt with supply disruptions in the past 24 months – with negative consequences for customer relationships, profit margins, time-to-market cycles, sales, and brand image.

... and rising volatility ...

And it's not only the risks in the supply chain that are growing – “normal” fluctuations are also on the rise. Volatility has always been one of the challenges in logistics and supply chain management, but the magnitude seen in recent years has exceeded everything that we once knew. The price of oil regularly hits new records, for example, only to collapse again just as dramatically before spiking upward

again. And the demand for certain products such as machinery was at an all-time high until the collapse of Lehman Brothers, when new orders fell by 50 percent or more, only to recover rapidly after a brief lull. When you look at demand and availability in recent years, the peaks and valleys in the charts have become almost the only constant.

... require transparent collaboration

How should one react to all of this? Or better yet: how should one act? Complex supply chains and volatile, uncertain conditions demand more of your processes: they must be stable and reliable and run flawlessly. That means that all supply chain partners such as suppliers and service providers must work together seamlessly and coordinate, synchronize, and integrate their workflows.

But how do you set up a supply chain that is both stable and agile? If you're asking this question, you must accept that you can't have it entirely both ways. The more stable and robust a supply chain, the more rigid and inflexible it becomes. The more a company

emphasizes agility, the more vulnerable the logistics chain becomes. If fewer partners are involved in production and logistics, for example, control becomes simpler – but the dependency on each partner grows. The goal is to strike the right balance. Each success story has its own recipe – but the main ingredient is always the same and often forms the core of these strategies: transparency. Or call it visibility. Or in plain language: the big picture.

Overview of the flow of goods and information

Only a standardized and comprehensive overview of the supply chain – where reasonable for all parties – makes it possible to achieve optimal control of all processes and work together successfully. This overview should encompass the flow of both goods and information and span all involved business partners to create end-to-end supply chain visibility. Taking this approach gives businesses a basis for better decision-making and allows them to identify potential problems in the supply chain before they occur, avoid risks, and get a handle on complexity and volatility.

Put simply: Visibility & Collaboration can save real money by ...

- ... optimizing the use of resources and capacities along the supply chain.
- ... restoring inventory to its optimum balance.
- ... enabling more revenue to be generated by preventing out-of-stock situations, for example.
- ... avoiding unnecessary costs, such as expensive air freight charges.

The Visibility & Collaboration Platform from AEB: your supply chain control center

The prerequisite for the necessary visibility and successful collaboration of all parties is an IT system that renders all resources, capacities, inventory, and processes in the supply chain transparent and standardizes, encourages, and facilitates the rapid exchange of information among the partners. AEB's Visibility & Collaboration Platform does just this: As the control center, it integrates all involved partners and systems, provides all relevant information in a standardized format, and offers the necessary tools and functions – from supply chain planning

to tracking, tracing, and proactive event management, and from inventory management, reporting, and performance measurement to time slot management at inbound and outbound loading docks. The Visibility & Collaboration Platform lets you map all supply chain processes and keep your supply chain in balance.

In other words: AEB brings light to your supply chain. Which makes your entire supply chain more efficient and powerful.



■ Instant Integration:

— Integration platform – many partners, one network

Information must flow for the cross-enterprise collaboration in your procurement and distribution network to function. Instant Integration lets you immediately link up all sources – from carriers, customers, suppliers, partners, and government agencies.

Collaboration made easy
Unfortunately, there is still no uniform standard – no official language of collaboration – for exchanging information throughout the supply chain. This often makes it very complicated to integrate partners. ASSIST4 has proven itself to be a capable “interpreter” for the various languages.

Easy integration of diverse sources of information
AEB software speaks the different languages of the ERP systems and carriers. Instant Integration allows easy organization of information from various sources and formats.

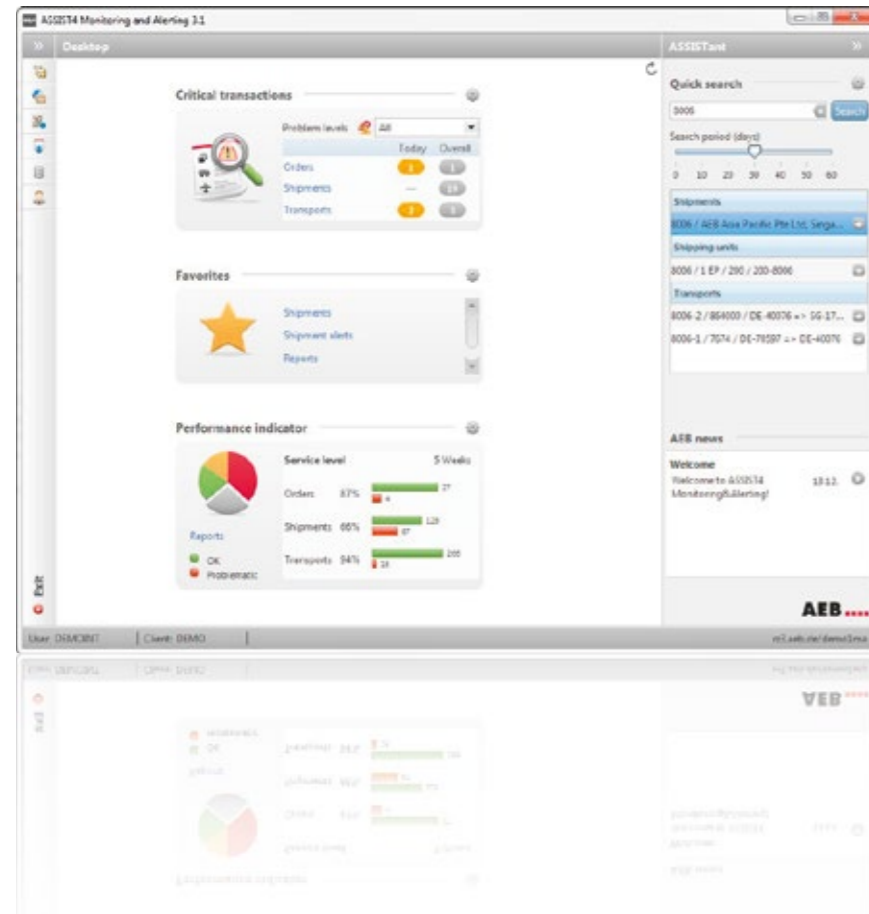
All necessary information is collected in the centralized AEB data hub and “translated” into a uniform format. Many transport service providers, forwarders, and express services have already been successfully linked. This ensures a smooth flow of the required data for the defined event chains.

Data from and into SAP®
Instant integration is set up by default for SAP® and the ASSIST4 execution modules. This means that the information stored there can be used by all parties. It also makes it possible to directly display the current status of a purchase order, shipment, or other object in SAP® or ASSIST4.

Linked out of the box
These forwarders, couriers, and parcel services – and many more – are available in the multi-carrier solution ASSIST4 Transport & Freight Management*. AEB manages the communication with the carriers.

* Request our brochure:
www.aeb.com/brochures

■ Instant Integration:



Visibility at a glance: Three widgets on your desktop provide all key information on your supply chain.

■ **Total visibility: for employees, partners, customers – online and in SAP®.**

Event management as enabled by the ASSIST4 Visibility & Collaboration Platform transcends traditional tracking and tracing – and elevates it to a higher level.

Ad-hoc queries online from anywhere

The Search Assistant lets you run ad-hoc search queries using any type of reference number at any time: from any Internet-connected PC, anywhere in the world. What sounds like a gimmick has a practical value, because it allows you, your colleagues, your partners, and even customers to search for business transactions on their own. This saves the costly administration and processing of such queries by e-mail or phone.

All in one place

The consolidation of all events and data into one system is a key benefit,

for it allows seamless transitions between various partners in the supply chain.

Customer portal enhances service capacity

You can further streamline your operations by providing customers with access to the tracking function as an online service. Utmost priority is assigned to ensuring strict access rights and to preventing one client from seeing another client's data. Once in place, as with the ASSIST4 core system, this type of online tracking saves costly in-house expenses and creates reliable processes for all partners.

■ **Document Provider: key documents available online**

Efficient collaboration along the supply chain depends on all participants having convenient, round-the-clock, online access to the partners' documents needed for their role in the supply chain. This is precisely what the Visibility & Collaboration Platform offers, functioning as a central hub where all partners can access the documents they need.

Shipping order or delivery note – accessible anytime

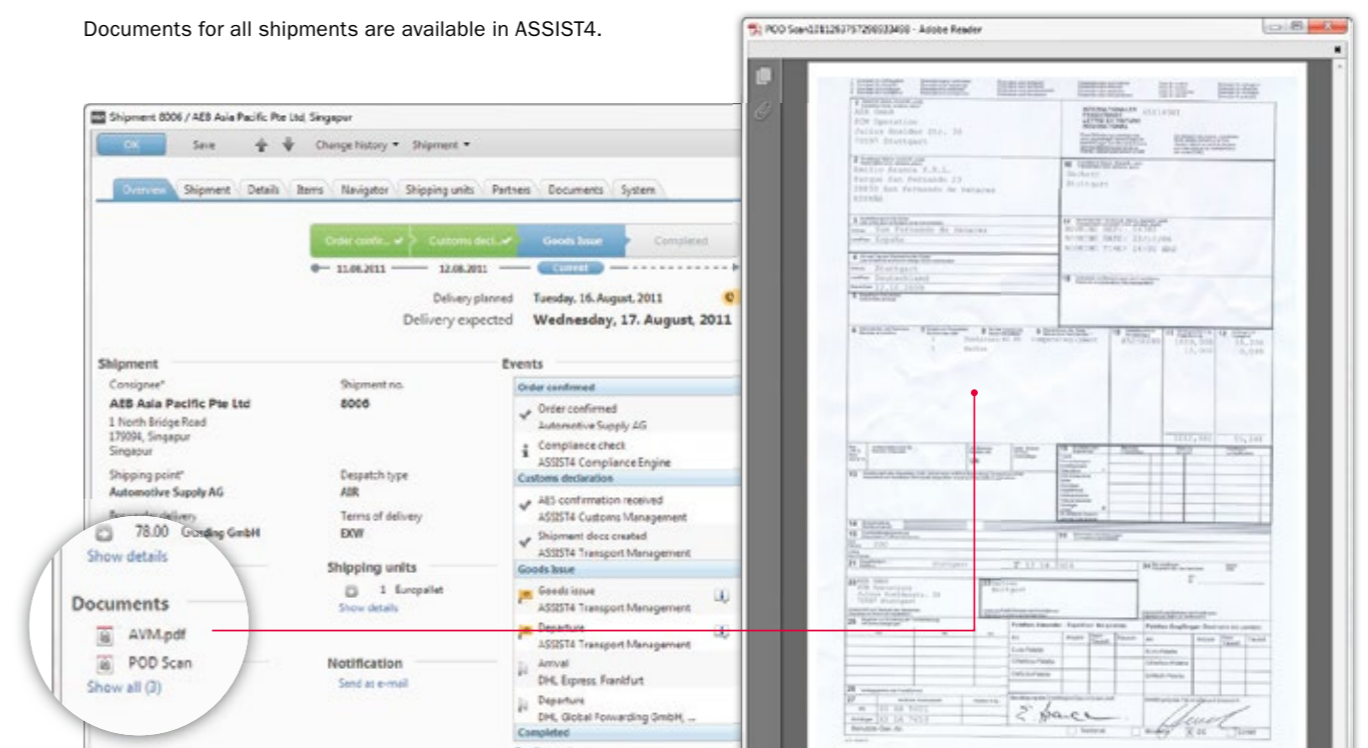
Do your customers need to receive the delivery note ahead of the goods? Give all parties – forwarders, transport service providers, customs agents, even customers – access to the Visibility & Collaboration Platform. Then anyone with the appropriate access rights can retrieve information and documents online – forwarding orders, packing lists, proofs of delivery, or delivery notes. This ensures that all your processes will run smoothly.

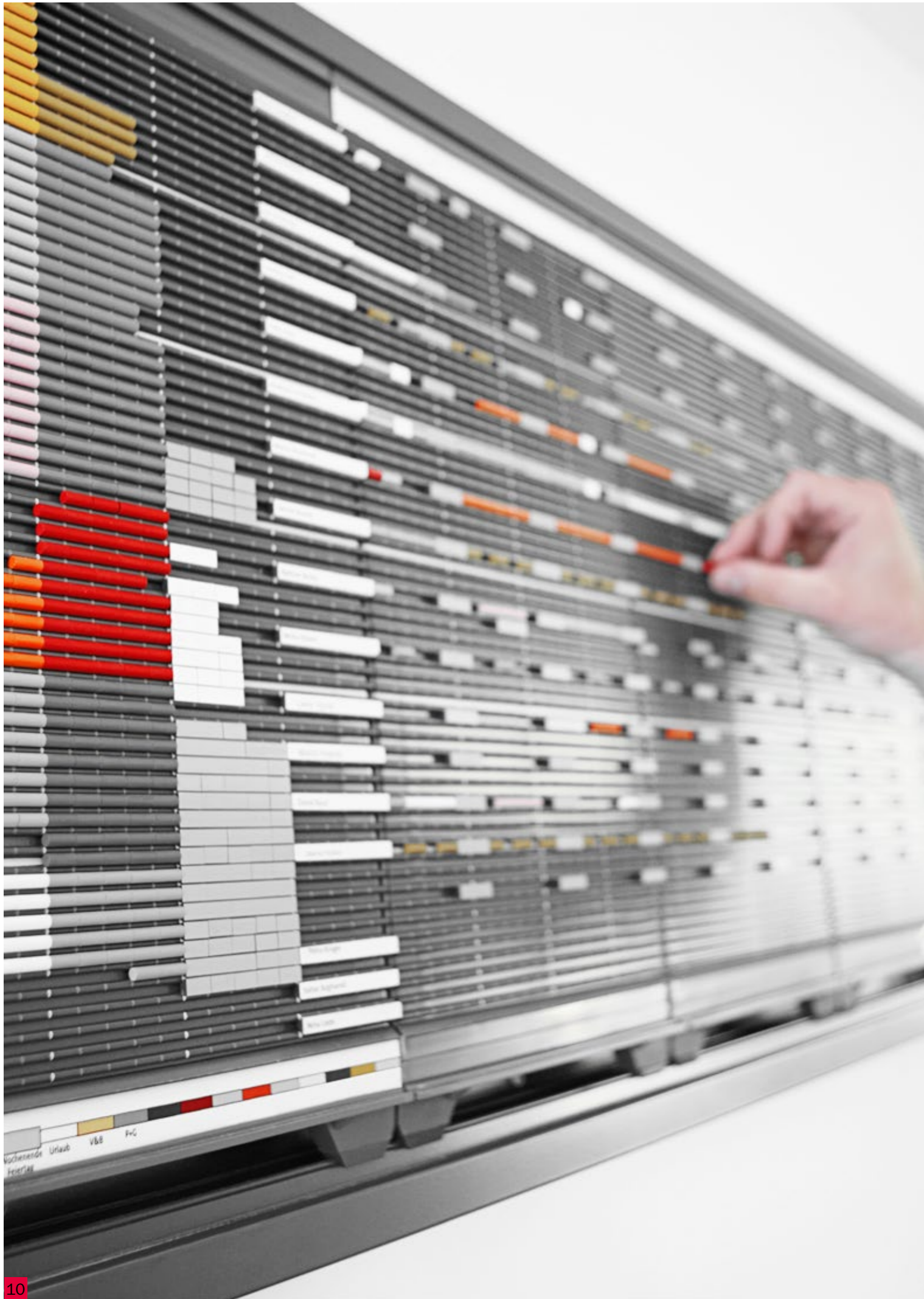
Assign custom rights for each document – and each partner

When information is shared, it's essential that each party can see only those documents that it needs and that it is entitled to see. No more – but also

no less. ASSIST4 makes sure this happens: you can release individual documents for specific business partners. And your customers can view their own delivery notes online. Any supply chain partner linked to the Visibility & Collaboration Platform can also make documents available to you. Such as the forwarder's proof of delivery (POD). This makes all documents available in one central location, which streamlines overall communication and makes information available to everyone almost in real time.

Documents for all shipments are available in ASSIST4.





■ Scheduling:

— Everything according to plan: the right goods in the right place at the right time

Logistics is one of the last great adventures. After all, this is about real people moving real goods through the real world. And it's full of all the drama of real life: the uncertainties of weather cause transport delays, a strike temporarily brings production to a halt. Or this one: a rock star is seen wearing a t-shirt from your collection, and suddenly everybody wants one – exceeding the wildest dreams of your demand forecasts.

Basic planning

Realistic planning is indispensable if you want to ensure that the right goods are in the right place at the right time. The Visibility & Collaboration Platform enables you to store the individual process steps together with the respective lead times. The supply chains can be mapped in great detail and thus be planned across all modes of transport. Based on this planning, the deadlines are monitored by the system. In case of delays, the software recalculates the individual process steps in real-time and adjusts the expected arrival time of a shipment. Logistics managers can see whether the promised delivery date is at stake and can interfere immediately.

The whole is more than the sum of the partial deliveries

In reality, deliveries often involve more than one actual shipment – partial deliveries are the norm. It makes sense to incorporate possible partial deliveries in the overall planning. If the t-shirts of your current collection are produced in Asia, several partial deliveries can be entered in ASSIST4 and their delivery can be monitored individually. ASSIST4 can manage this overall planning with precision, so you have an exact picture of when, where, and in what quantity your orders must be delivered.

— Delivery Time Determination: delivery times always on schedule

Many partners in the supply chain means many agreements that all parties must keep. Without clear, standardized order planning, you run the risk of delayed shipments. To guarantee on-time performance and reliability of deliveries, it is required to determine the delivery date as precise as possible in advance.

Simulate and plan orders

You can save time and money on your orders by running simulations based on predefined planning figures. ASSIST4 presents various transport recommendations which you can then use to decide how to best plan your transport chain.

Calculate alternatives

Which transport option is currently the cheapest? And which is the fastest? ASSIST4 knows the answers, because the costs and lead times of the various modes of transport are stored in the database. A click of the mouse is all it takes to run through various options: How much faster is it to send the order by air freight, and how much more will it cost? Or how much cheaper is the ocean freight alternative and how long will it take? You can quickly weigh your options and find the right one for you.

— Event Monitor: central console for supply chain events

The Event Monitor lets you proactively monitor your supply chain execution in real time.

Uniform view

The key benefit of the Event Monitor is the uniform view of all events in one central place. Here you can get all the information you need: Is the object on schedule? Which milestones have been reached? Have any notes or infos since been received? The result is process transparency to a degree seen neither in conventional execution systems nor in ERP systems.

Easy access to any information

AWB numbers, flight schedules – even a scan of the POD document: it's all just a click away in the Event Monitor.

First place to go when disruptions loom

The Event Monitor gives you an overview of disruptions in your supply chain and a clear picture of

your remaining options. When delays occur, individual process steps such as the ETA are recalculated in real time and even adjusted for time zones and holiday schedules. This gives you transparency and a solid decision-making basis, even when the schedule changes. Icons help you more easily identify and pinpoint delays.

Fewer surprises, better resource planning

To optimize your workforce deployment, you need reliable information on what's coming and going at your distribution centers, production facilities, and outlets.

The Visibility & Collaboration Platform provides you with this basic information, including automatically generated reports on expected goods receipts and issues broken down by location, receipt or shipping point, and time. Here, too, the platform gives you the overview that you need to avoid overstock and increase cost-effectiveness.

Icon	Result
	Milestone was on time (past).
	Milestone was on time (today).
	Milestone was late.
	Milestone not yet reached.
	Warning. A delay has occurred, for example. The timing of the warning can be defined by your administrator – after a delay of six hours, for example.
	Error. It was not possible to transport your shipment within the designated time frame. Action is required. The parameters of the error message can also be defined by your administrator.
	Fatal error. A transport failed – due to loss at sea, for example. The system will therefore no longer track and monitor the shipment.
	Canceled. The transport was canceled.
	Info. An info event was received for the day.

The icons help you keep an eye on the big picture, identify exceptions more quickly, and respond rapidly.



— Milestone Mapper: laying the foundation for better event management one milestone at a time

The Milestone Mapper in the ASSIST4 Visibility & Collaboration Platform lets you map your supply chains and process steps, building the foundation for real-time monitoring.

Step 1: define milestones

It's easy to define milestones and link them to specific attributes: which partner is responsible for taking care of a particular step, how much time is available, at which points should a status update be generated – all this information is standardized and entered without any programming.

Step 2: define target lead times

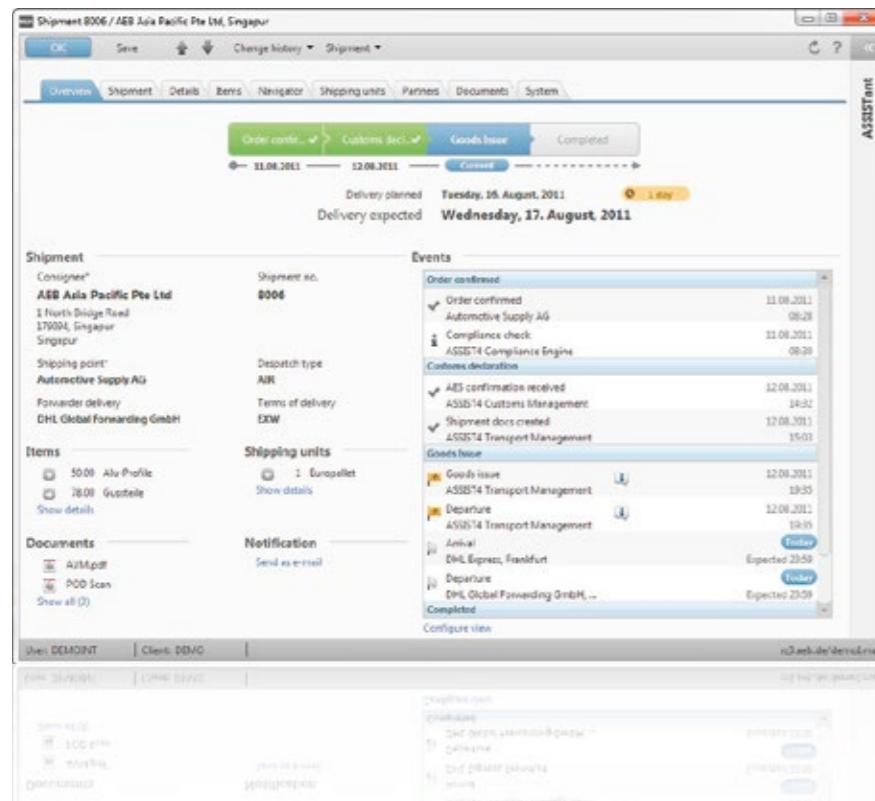
The same applies to lead times that you schedule for the various segments from milestone to milestone. Milestones plus lead times define the event chain, providing the foundation for proactive performance monitoring and alerting.

All without programming

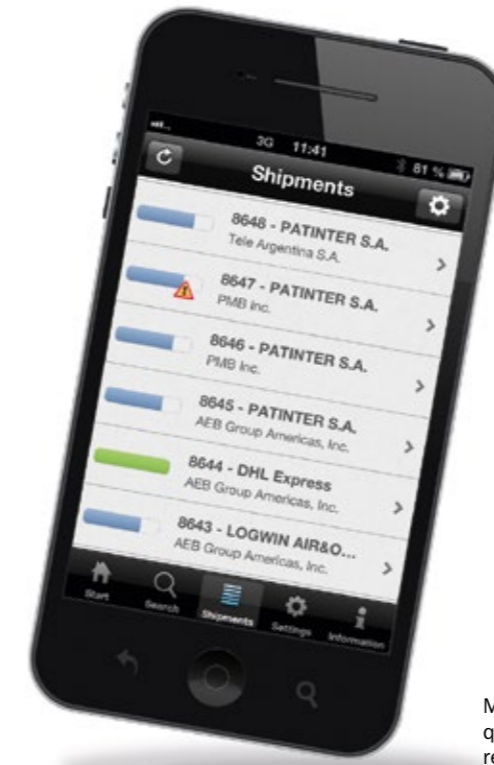
Visibility projects often stumble on this very foundation and a lack of flexibility. The Milestone Mapper of the Visibility & Collaboration Platform clears this hurdle and even lets you quickly and easily define new and changed transport processes.

IT real-world model

ASSIST4 creates a system model of the physical flow of goods and the processes that are independent of this flow. Illustrative graphics let you track individual shipments and see at a glance whether a delay is acceptable or intervention is needed. Estimated times of arrival are adjusted as soon as problems are resolved.



Expected events and milestones immediately visible. Graphics help you visualize transport chains.



Mobile monitoring of the flow of goods: the "Monitoring & Alerting" app enables you to query information about your flow of goods conveniently via iPhone. The mobile solution retrieves the data directly from the ASSIST4 Visibility & Collaboration Platform.

— Track Control: you decide what is monitored

Transparency is always a question of perspective: however you look at it, AEB's Visibility & Collaboration Platform provides all conceivable perspectives of your flow of goods. You have complete control over which object or document you wish to track.

Sales order. Shipment. Material. Product. Mode of transport. And much more.

The Event Monitor queries may vary widely depending on who is checking the current status of a process chain and when. A customer service employee is often interested in one specific customer order – the order of the customer on the line. Distribution center managers, on the other hand, want to know when each shipment will arrive so they can plan their resources accordingly.

Everything traceable down to the item level

Many other perspectives of your supply chain events are possible. That's why ASSIST4 gives you the maximum possible freedom here. Nearly any type of object or document can be tracked: sales orders and sales order items, delivery notes and delivery note items, complete truckloads, containers, packages, and much more. You can even search by batch, size, color, and variant.



■ Alerting:

— Proactive notification of status updates and above all alerts when there are deviations from the defined plan

Production delays, delivery problems, inventory bottlenecks – all are potential disruptions to your supply chain. A study looking at transatlantic supply chains identified 14 points where disruptions or interruptions may occur.

These potential pitfalls can quickly grow to 50 or more in the case of intercontinental supply chains with production processes overseas, for example. Ideally, no disruption will actually occur at any of these points. But if there are problems, the most important thing is to receive immediate, proactive information. That's precisely where ASSIST4 comes in.

Information delays dull your competitive edge

The main problem businesses face today is the huge time lag – hours or sometimes days – between a deviation and the news of its occurrence. Often it is no longer possible for the decision-makers to react. Margins erode, and entire customer relationships are in danger.

Alerts when deviations from the plan occur

Deviations from the plan compromise the performance of your supply chain and threaten its cost-effectiveness. That's why it's essential to be notified of any potential deviations as quickly as possible.

ASSIST4 identifies deviations whenever a scheduled milestone is not reached at the expected time. This triggers an alert to the appropriate contact persons.

— Proactive Alerting: sound the alarm only when necessary

An important success factor for supply chain visibility projects is well-defined tolerances and alerting workflows. AEB's Visibility & Collaboration Platform makes this possible and keeps you from drowning in a flood of status updates.

Immediate alerts only for immediate danger

It doesn't make sense to receive an e-mail every time there is a minor schedule deviation. It would be just as ineffective to be notified of every milestone that was reached on time. The Event Monitor tracks the processes and event chains defined in the Milestone Mapper but does not automatically

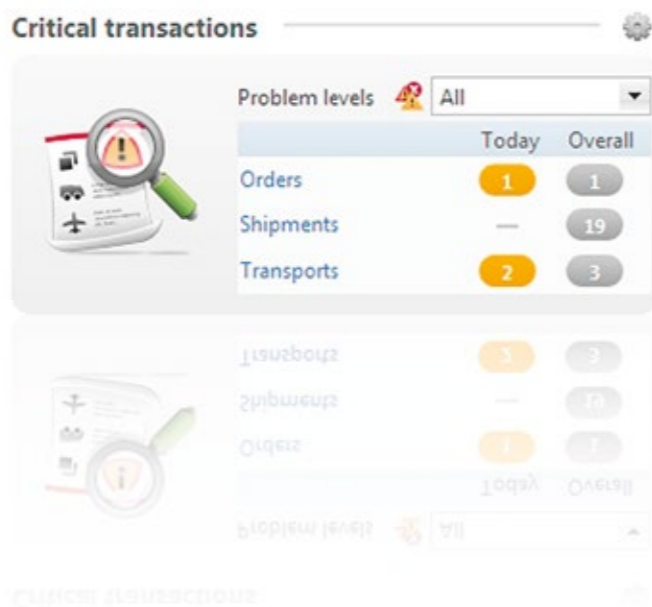
sound the alarm when an event doesn't occur at the expected time – unless the delay is at a critical point that could seriously jeopardize the performance of your supply chain.

Sliding alert system

Experience shows that a sliding scale of warnings and alerts is a more practical approach to many exceptions. That's why ASSIST4 also lets you define tolerances and escalation levels that control the alerts for missed events. Tolerances determine how long an event defined in the Milestone Mapper may be delayed before an alert is triggered. Once the tolerance level is reached, the alert is triggered immediately and all the process participants are notified.

Custom messaging

You can also freely define who receives which notifications, warnings, and alerts – and when. You can even have the content of the notification dynamically supplemented with data from the system. A link in the alert e-mail takes the recipient directly to the Event Monitor, where he or she can quickly obtain an overview of the situation and make an informed decision. The escalation function lets you create multi-phase schedules to notify additional and more senior-level people the longer an event is delayed.



The smart alert concept from ASSIST4 provides a clear view of critical transactions.

— Active Notification: status updates

Status changes in the supply chain usually require that the relevant parties be notified. At least when they need to initiate appropriate actions – or decide whether actions are taken. ASSIST4 automatically notifies supply chain partners and provides a complete overview with the help of the Event Monitor. Your customers and carriers are automatically notified of the supply chain status.

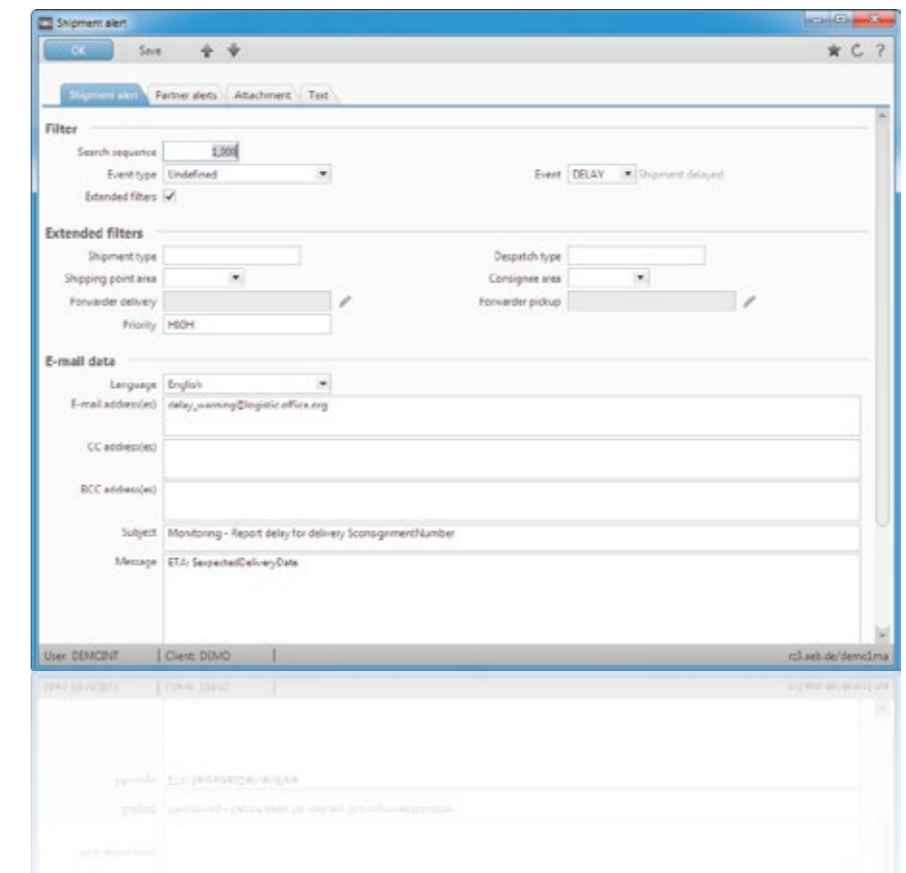
Information on status changes

The Visibility & Collaboration Platform ensures that your partners and customers are notified of all relevant status changes in the supply chain. Customers are notified of the shipping status of the goods they ordered, for example. And your transport service provider is notified when the next shipment is ready for pickup. The added value to you: you enhance the quality of your service for all supply chain participants.

Automated and standardized communication

Long, complicated communication channels are unavoidable if there is no defined notification concept. The ASSIST4 Visibility & Collaboration Platform automates and standardizes the communication processes with your supply chain partners, so all parties involved receive exactly the information they need without having to initiate communication or take any action whatsoever.

Simply choose: you configure how status updates are sent out.





■ Reporting:

— Reports and analyses: foundation for continuously improving performance throughout your supply chain

ASSIST4 knows the plan – and even performs the operational logistics processes, so KPIs, performance analyses, and other reports are just a mouse click away.

Make the performance of your supply chain measurable

The Visibility & Collaboration Platform is the ideal tool to measure the performance and reliability of your supply chain using analyses, ad-hoc reports, alerts, and dashboards. The unique strength: because ASSIST4 also automates and standardizes the supply chain execution, you have the option of incorporating all internal processes into the performance test. The Visibility & Collaboration Platform gathers data and figures from all the integrated

systems of your partners, then consolidates and analyzes the information. This means you incorporate not only the data directly collected by ASSIST4, but also the information received by the platform through the central data hub, so all the essential information comes together in one place. Your advantage: detailed, informative reporting across your entire supply chain.

— Added added value: the Supply Chain Analyzer

ASSIST4 offers further benefits by constantly collecting and preparing data to generate in-depth reports on the performance of the various partners.

CIP with KPIs

ASSIST4 lets you leverage this information for a continuous improvement process (CIP). Key performance indicators (KPIs) can be defined and tracked. User-friendly graphics give you even greater transparency in your daily routine. You can generate and distribute in-depth statistics down to the last detail to analyze weak points or best practices: Which carrier delivers on time? Which supplier has the lowest rate of quality defects? How long are the average lead times? At which border crossing does customs clearance take the longest? Get the answers to these and other questions.

Work with the best partners

Such analyses are often very helpful in negotiations with carriers and other partners, since they document the actual level of performance. They help you strengthen your negotiating position to achieve fair and appropriate conditions. You can identify which partners are especially strong and reliable, then give such partners preference to further optimize your own logistics strategy.



■ Inventory management:

— Clear view of all inventory in all warehouses – at all sites

Logistics and supply chain managers have been taking a closer look at inventory. Inventory ties up capital – but it also enables agility and rapid response. So a balance is needed. And new approaches – because merely calculating safety stock according to the rules of logistical calculations is no longer enough in times of regionally distributed warehousing and highly synchronized logistics, when a growing percentage of the inventory may be on “rolling warehouses.”

One WMS system with a view of all sites

Often, each warehouse uses its own warehouse management system, and there's no way to continuously obtain a complete, consolidated view of all stock.

Two basic solutions are possible: A single warehouse management system can be installed which is accessed by all sites. Here the multi-site transparency is just a question of perspective: local warehouse managers restrict their view to the inventory at their location, and when a multi-site view is needed, you simply zoom out to monitor all inventory. But this solution is not always feasible or the most cost-effective, so it's good that there is an alternative.

Platform strategy: linking all WMS systems

The second solution takes a different path by extending the principle and technology of collaboration to include the inventory. The Visibility & Collaboration Platform of ASSIST4

makes it possible to integrate all the different warehouse management systems into the one platform. This gives you consolidated, standardized access to all inventory information from all operational systems, including those of your partners.

As the central hub, the Visibility & Collaboration Platform has the big picture of the stock levels of all warehouses and knows which material is available where and in which quantities. And since the system is monitoring all the shipments as well as the inventory, you also gain transparency of all stock “in transit.”

— Material Cockpit: inventory control made easy

The Material Cockpit is a convenient monitoring tool offering not only an overview of all available stock and stock forecasts but transparency across all shipments, with detailed information on each shipment's current location.

A view of all warehouses, an overview of all stock

The Visibility & Collaboration Platform delivers a comprehensive view of all inventory. At all sites. You can monitor all your warehouses and always know where which quantity of the selected material is available.

Access for customers and suppliers

You can also grant your partners access to the Material Cockpit. Customers can check your inventory levels before they order the goods. Through the Material Cockpit, you can query the availability of the relevant material yourself using the material number. The benefit to you: the monitoring feature saves you the high costs of internal coordination and enhances the quality of your service.

Alerts of impending stock shortages

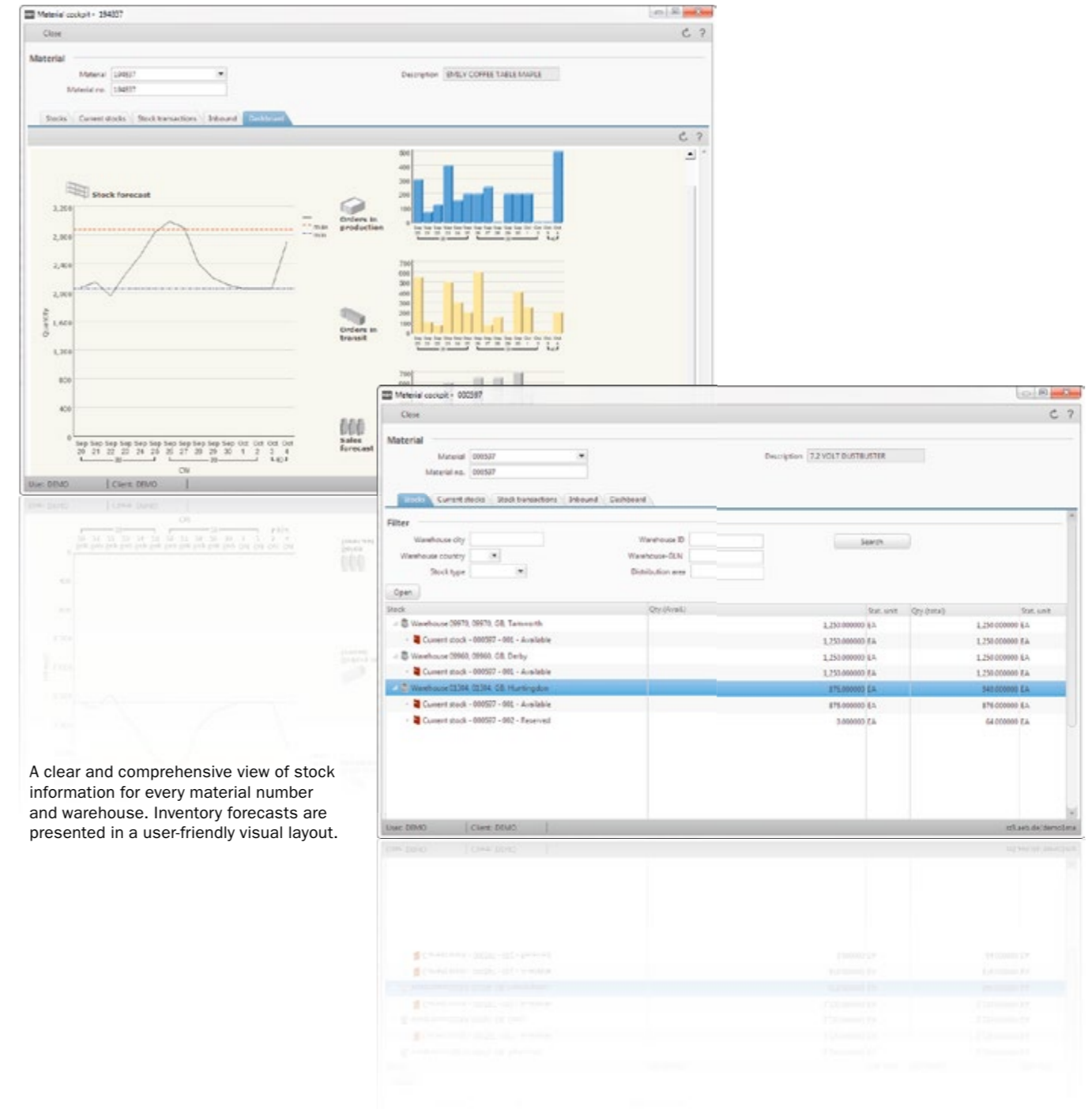
The ASSIST4 Visibility & Collaboration Platform gives you early warning of an impending shortage of stock. You can assess the consequences and act immediately – ordering new parts or producing new materials, for example. The alert feature lets you avoid out-of-stock situations. When outlets and retailers always receive replenishments on time, the quality of your service is enhanced, which in turn yields higher customer satisfaction.

Inventory en route

Do you always know how much of your stock is in transit? If stock is removed from warehouse A and sent to warehouse B, the latter posts the stock only after the goods have been delivered. Until that happens, this stock is off your radar. And you cannot include it in your inventory management. The ASSIST4 Visibility & Collaboration Platform brings light to the darkness. Since all transports are monitored and their stock is transparent, the Material Cockpit displays and tracks all goods in transit.

Looking ahead: forecasts and predictions

This linking of inventory and transport monitoring also makes it possible to project stock levels in the near future. Anticipated levels of stock can be predicted based on transport lead times. The inventory forecasts tell you when to expect which quantities of which materials in which warehouses. This gives you greater flexibility, allowing you to incorporate anticipated stock into your planning.



A clear and comprehensive view of stock information for every material number and warehouse. Inventory forecasts are presented in a user-friendly visual layout.



■ Time Slot Management:

— Time Slot Management: no lines or waiting at the loading dock

Many businesses see a need for optimization when it comes to the activities at their loading docks. Time Slot Management balances loads, streamlines processes, and increases productivity. Past solutions have approached this as a standalone problem. ASSIST4 Time Slot Management takes it to the next level: since ASSIST4 is already capable of monitoring and controlling the other logistical processes, your optimization is not only limited to one element – loading and unloading schedules – but you synchronize this step with your other intralogistical processes.

Need for optimization at the loading dock

Long wait times at the loading dock are frustrating, and not just for truck drivers. Waiting to load and unload is “lost time” for forwarders. And traffic jams and peak times are an annoyance to shippers: sometimes the pace is hectic, and sometimes the employees are waiting for work.

Time slot management: managing your loading docks

Early booking and tracking of time slots helps balance the load and reduce wait times. This leads to fewer delays and can significantly optimize loading dock activities. IT enables better planning in the warehouse and at the loading docks, so you can optimize the use of your resources.

More than simply booking a time slot: ASSIST4

With the loading dock management features of ASSIST4, you always know which loading docks are occupied and which are still free at any given time. The AEB software also lets you monitor all the loading and unloading activities: analyses make it possible to track the on-time performance of forwarders or the utilization of each loading dock. And above all, a standardized tool improves communication with forwarders.

— Booking Cockpit: opening up time slots

The Booking Cockpit is a component of the ASSIST4 Visibility & Collaboration Platform that allows your partners to reserve time slots at your loading docks. And it is your tool for monitoring the loading docks.

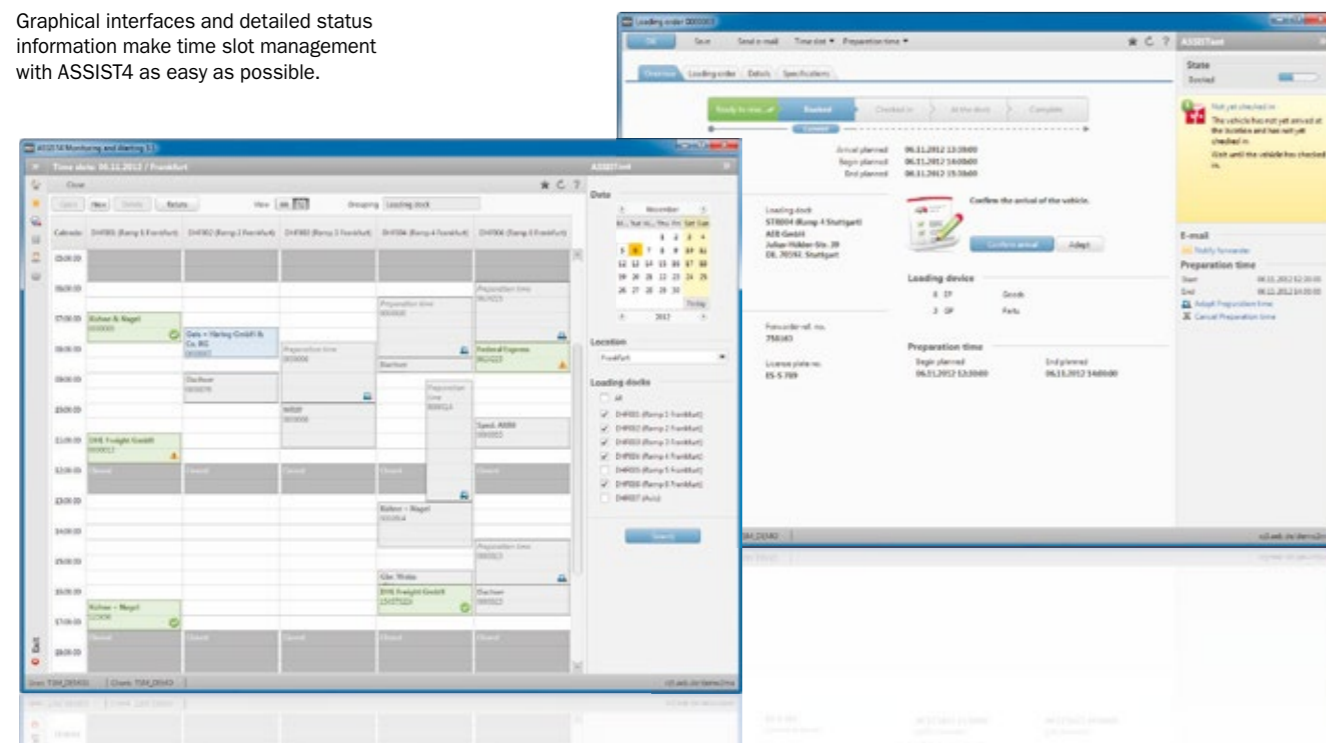
Time slot booking: a few clicks and you're in
ASSIST4 makes it easy for forwarders to book time slots: they simply access the Booking Cockpit at any time, check which time slots are free, and book the slot of their choice with just a few clicks. The size of the time slots can be manually defined or automatically determined. Since the Visibility & Collaboration Platform also monitors the operational aspects of the logistics, data from orders, shipments, and transports is automatically applied.

Adjustable loading dock height? No problem for ASSIST4
ASSIST4's flexibility makes it easy for your partners to book their time slots. The Booking Cockpit can even store information for different types of loading docks – fixed-height and

adjustable-height, for example. This way, your transport service providers can see which loading dock is right for their vehicles when they book the time slots. This prevents unnecessary questions and rebookings.

Control who sees what
Forwarders have quick and easy access to the Booking Cockpit, where they can see all available time slots at a glance. You can even make certain advanced features visible to selected partners – booked time slots, for example. What's important is that partners can see only the time slots they are still allowed to book – or have already booked.

Graphical interfaces and detailed status information make time slot management with ASSIST4 as easy as possible.



— Crystal-clear transparency: with ASSIST4 loading dock management

From the booking of the time slot to the arrival of the truck at the right loading dock until loading and unloading is complete: ASSIST4 keeps you in the know at all times about goods receipt and issue.

Monitoring loading dock activities
The Visibility & Collaboration Platform lets you track all the status updates up to the point when the vehicles are loaded or unloaded: Was the time slot booked? Did the truck driver arrive? Did the driver report to the front gate? Once the loading dock opens up, you

can simply send a message to the driver through ASSIST4 – a text message, for example – with a note about the assigned loading dock.

Wasting no time: in control of time slots
ASSIST4 lets you easily manage the time slots of all your loading docks, quickly assigning individual time slots to specific loading docks. Even moving time slots is child's play. And with ASSIST4 you have the entire shipping situation under control: Which forwarder booked which time slot? So you know right away when to expect which orders for goods receipt. Once the truck has arrived with the

goods, ASSIST4 shows you at a glance which vehicle is at which loading dock.

Automated alerts: overruns flagged immediately
The reality is that there will always be last-minute schedule changes, whether it's the caprices of weather or traffic snarls. To keep this from leading to chaos on your loading docks, ASSIST4 automatically and proactively alerts you if a booked time slot is overrun. You have the option to respond immediately – for example, by sending the next arriving truck to an alternate loading dock.

— Black and white: loading dock capacities and the performance of your partners

ASSIST4 creates in-depth reports on the utilization of individual loading docks and your overall situation, so you know how your forwarders are performing.

Progress from dock to dock
The ASSIST4 Visibility & Collaboration Platform continuously gathers data on each one of your loading docks and

compiles this data into informative statistics: What is the average wait time on loading dock 2? What is the average wait time on all your loading docks? And how well utilized are all loading docks or a particular dock? ASSIST4 observes these statistics over a given period so it can chart the utilization of all your docks over a quarter year, for example. This highlights vulnerabilities and tracks any improvements you've made along with further potential improvements.

Taking a closer look, including at the performance of your partners
ASSIST4 brings transparency not only to your internal processes but also to the performance of your partners. You can track the on-time performance of your forwarders in detail. This gives you a good negotiating position with your partners. You can easily identify the reliable partners – another way you can improve the performance of your own logistics.

— Excellence in supply chain execution has a name: ASSIST4

The basis for efficient **collaboration** in the supply chain. Transparency and performance analysis. End to end.

Organization of your order processing. Overview of your **fulfillment**. Monitoring costs and workflows.

Supports all warehouse and distribution center activities and increases efficiency in your **warehouse processes**.

Streamlined processes in supply chain execution: **transport management** and **freight cost control**.

Business services for all **customs processes** in procurement and distribution. Standardized. Automated. Integrated.

Meet all **risk** and **compliance** requirements. Avoid possible violations and trade securely.



Visibility & Collaboration Platform

- Integration platform
- Scheduling
- Monitoring
- Alerting
- Performance analysis, reporting & KPIs
- Process & stock visibility
- Time Slot Management



Order Management

- Order entry
- Qualification
- Fulfillment planning & checking
- Fulfillment monitoring & controlling
- Assessment & billing



Warehouse Management

- Goods-in & goods receipt
- Stock placement, stock transfers, cross-docking
- Stock overview & stock checking
- Picking & packing
- Dispatch & shipping
- Goods issue
- Mobile applications
- Cockpit



Transport & Freight Management

- Shipment consolidation
- Transport preparation
- Transport orders
- Freight cost management
- Freight cost optimization
- Freight invoice auditing
- Tender Management
- Simulations
- Carrier Integration



Customs Management

- Integrated global trade management
- Import
- Export
- Bonded warehouse, IPR, OPR
- EMCS, Intrastat, transit procedures
- Product classification
- Origin & preferences



Compliance & Risk Management

- Global Trade Integration
- Restricted party screening
- Export controls
- EU & US regulations
- License management

AEB (International) Ltd

3 Olympus Court
Olympus Avenue
Tachbrook Park
Warwick CV34 6RZ
Phone: +44 1926 801250
Fax: +44 1926 801251
E-mail: info.uk@aeb.com
www.aeb.com/uk

AEB (Asia Pacific) Pte Ltd

1 North Bridge Road
#14-01, High Street Centre
Singapore 179094
Phone: +65 63379300
Fax: +65 63379667
E-mail: info.sg@aeb.com
www.aeb.com/sg

AEB Sweden

Baltzargatan 21 B
211 36 Malmö
Phone: +46 40 85011
E-mail: info.se@aeb.com
www.aeb.com/se

AEB Nederland

Rivium Boulevard 301-320
2909 LK Capelle aan den IJssel
Phone: +31 88 3131700
Fax: +31 88 3131799
E-mail: info.nl@aeb.com
www.aeb.com/nl

AEB Germany

Headquarters

Phone: +49 711 72842 300
E-mail: info.de@aeb.com

AEB Switzerland

Phone: +41 43 211 1060
E-mail: info.ch@aeb.com

AEB Austria

E-mail: info.at@aeb.com