

Anleitung

AEB Home Screen

Zebra TC51

Zebra TC52/x

Zebra TC57/x

Zebra TC75x

Zebra TC77

Zebra MC3300/x

Legal notice

Certain functionalities described herein or in other product documentation are available only if the software is appropriately configured. Depending on the product series, software is configured either in consultation with your AEB representative or with the help of documentation obtained from your AEB representative. Details are set forth in your agreement with AEB.

“AEB” always refers to the company with which you as a customer have concluded the respective agreement. This is either AEB SE or any majority-held subsidiary of the same. An overview of these subsidiaries can be found on our website www.aeb.com. Any exceptions to this rule are identified by specifically naming the company in question.

The program may only be used in accordance with the conditions set forth in the license agreement.

Trademarks

Trademarks in this product information are not explicitly marked as such, as is the norm in technical documentation:

- Adobe, Acrobat, and Reader are brands or registered trademarks of Adobe Systems Inc.
- HTML and XML are brands or registered trademarks of W3C®, World Wide Web Consortium, Massachusetts Institute of Technology.
- TIBCO JasperSoft Business Intelligence Suite is a brand of TIBCO SOFTWARE INC.
- Java and Oracle are registered trademarks of Oracle Corporation.
- Microsoft Windows, MS Word, MS Excel, and MS SQL are registered trademarks of Microsoft Corporation.
- Salesforce, Sales Cloud and others are brands of salesforce.com, inc.
- SAP and SAP S/4HANA are trademarks or registered trademarks of SAP SE.
- SAPERION is a trademark of Perceptive Software Deutschland GmbH.
- Sybase SQL Anywhere is a trademark or registered trademark of Sybase Inc. Sybase is an SAP AG company.

All other product names are assumed to be registered trademarks of the respective company. All trademarks are recognized.

The information contained herein is non-binding and for information purposes only.

Copyrights

All rights, especially copyrights, are reserved. No part of this product information or the corresponding program may be reproduced or copied in any form (print, photocopy, or other process) without the written consent of AEB. This product information is provided solely to customers of AEB for their internal use in conjunction with software licensed from AEB. This information may not be shared in any form with third parties, except the employees of the customer, without the written consent of AEB, and then also exclusively for use in conjunction with software licensed from AEB or AFI Solutions GmbH (AFI GmbH).

AEB Plug-ins for SAP®: Use of AEB product code

Maintenance and development may at any time cause changes to the standard system's internal programming. For this reason, the customer is prohibited from programming in such a way that directly addresses internal programming functionalities (such as in the SAP object code). This restriction does not extend to documented code designed to facilitate customer use, such as an interface for accessing product functionalities.

© 2019

Date: January 30, 2019

Content

1	AEB Home Screen	1
1.1	Basic information	1
1.2	Technical terms	1
1.3	Function keys of the handhelds	1
1.4	Default passwords	2
1.5	User screen mode	2
1.5.1	Battery/wireless network information	2
1.6	Settings	3
1.6.1	Admin login	3
1.6.2	Activating settings	4
1.6.3	Wireless LAN	5
1.6.4	Add or remove applications	5
1.6.5	Set icon size	6
1.6.6	DataWedge	6
1.6.7	Admin logout	7
2	AEB Launcher	8
2.1	Add a connection (application URL)	8
2.2	Login	9
2.3	Admin mode	9
2.3.1	Activate logging	10
2.3.2	Backup/restore	10
2.3.3	Add or change connection (application URL)	11
2.3.4	Scanner test	11

1 AEB Home Screen

1.1 Basic information

On the handheld runs a start screen called *AEB Home Screen*. The start screen has already been configured by AEB so that only certain applications and settings are visible to you.

The *AEB Home Screen* starts automatically after a device start or restart. The *AEB Launcher* starts in the *Auto Launch Mode* with a delay of eight seconds.

1.2 Technical terms

DataWedge: Easily integrates data between the AEB Launcher and the Android device. For example, you can use a bar code type or a special check digit at the end of a bar code.

AEB Launcher: A mobile application developed by AEB (Android app), based on HTML5.

AEB Home Screen: Used to create a user screen mode, for example to block certain applications and settings.

ASM: The applications are provided via the "Application Service Manager" (ASM) and can be called via the AEB Launcher (Android app) using a connection (application URL).

1.3 Function keys of the handhelds

Home button:

Calls the start page of the AEB Home Screen.

Search button:

Shows the last opened applications.



Back button:

Calls the last step

Menu button:

Displays the menu of a particular application.

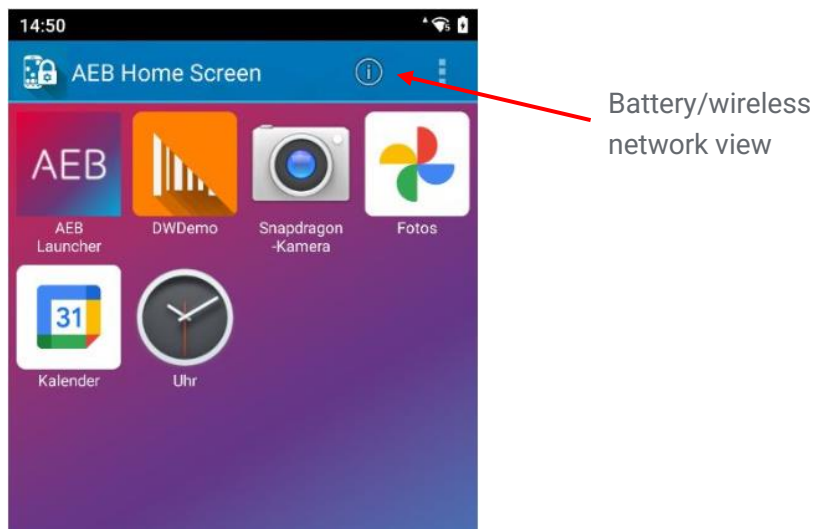
1.4 Default passwords

The predefined default passwords can be found in the table below:

Admin login for the AEB Home Screen	aeb12345
Admin login for the AEB Launcher	aeb12345

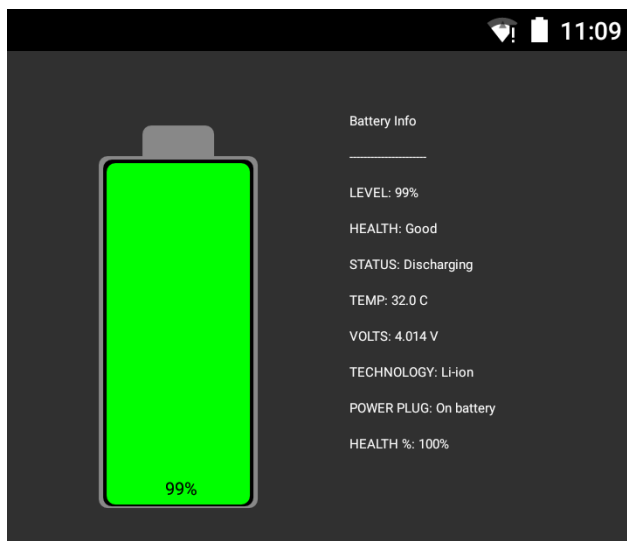
Note: If you change any of the above passwords, make sure that they are well documented. If you have forgotten the password, the complete device must be factory reset.

1.5 User screen mode



1.5.1 Battery/wireless network information

The (i) icon in your user screen mode can be used to display the battery or wireless network quick window view as the real-time status of the device:

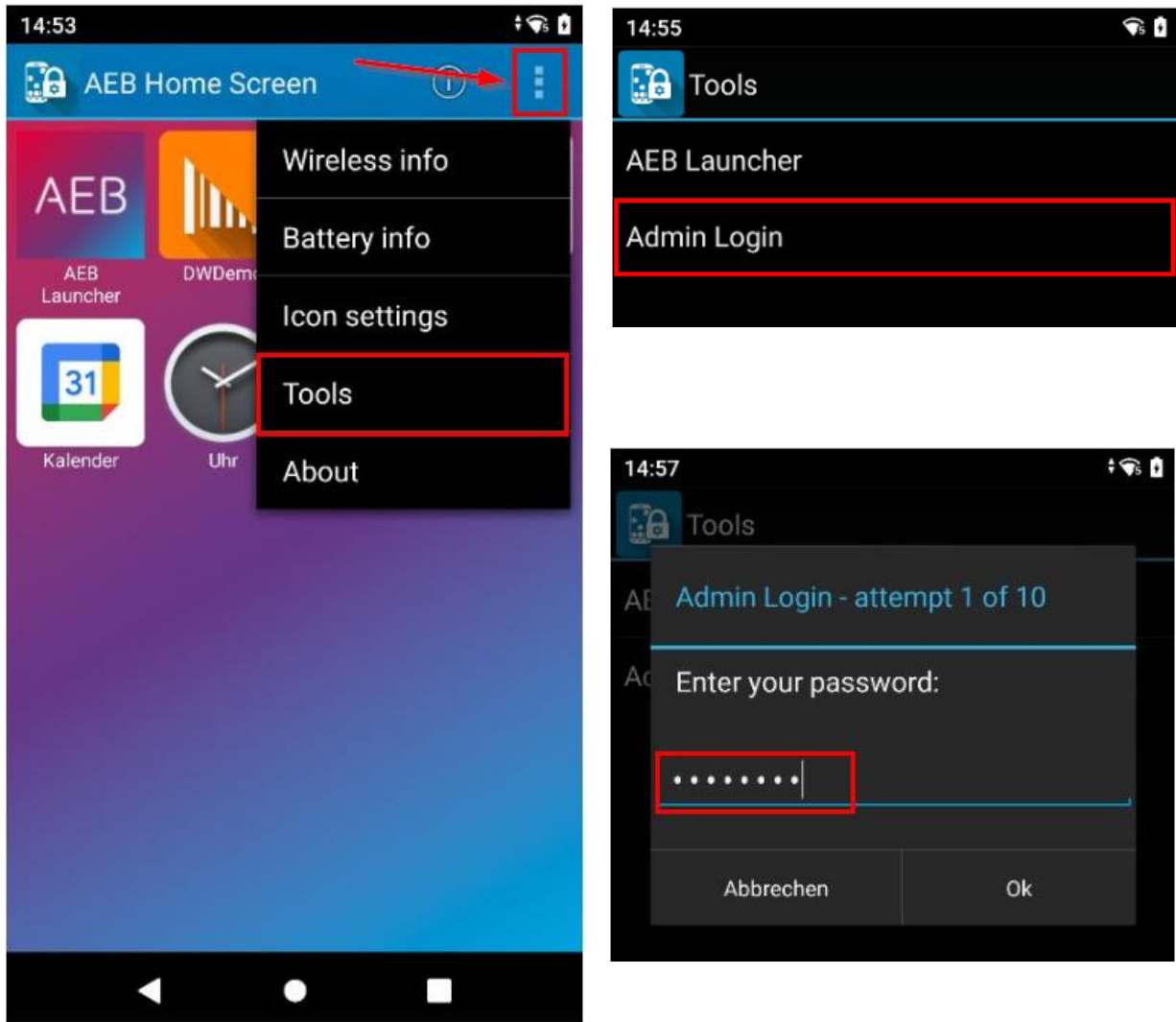


1.6 Settings

Using your password (see 0) log in to the *Admin Login* to approve certain applications or change settings such as the wireless network. Once you have made your adjustments, you can exit the admin mode by clicking *Admin Logout*.

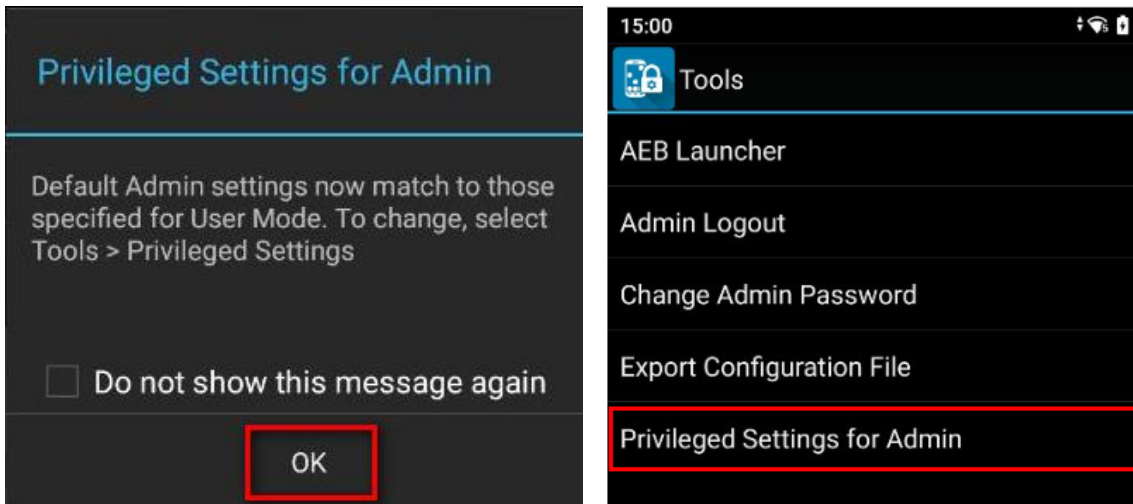
1.6.1 Admin login

Tap the menu icon and open the *Tools* menu item. Select *Admin Login* and enter your password.

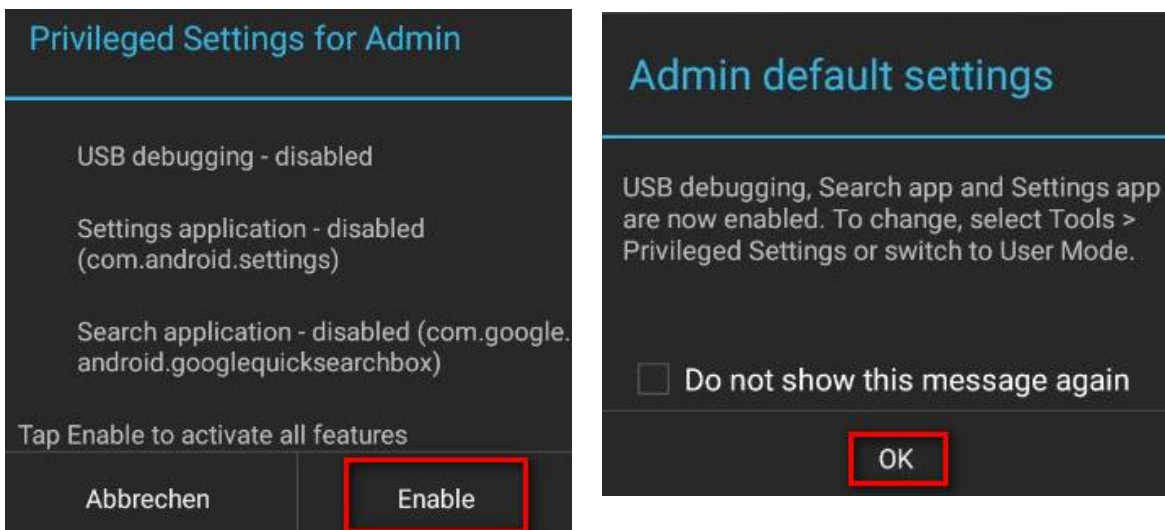


Click *OK* to proceed.

1.6.2 Activating settings



Confirm with *OK* and select "Privileged Settings for Admin".

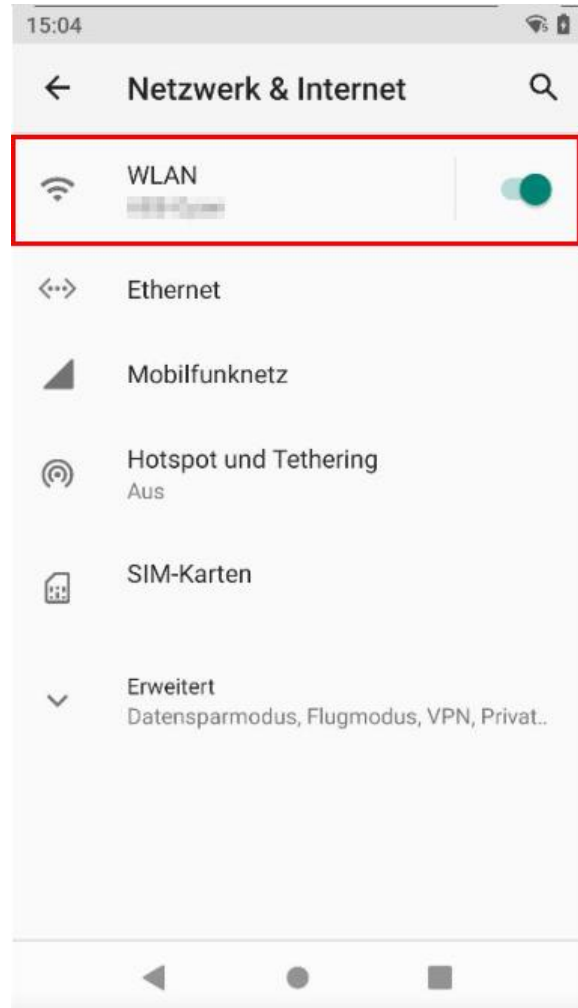
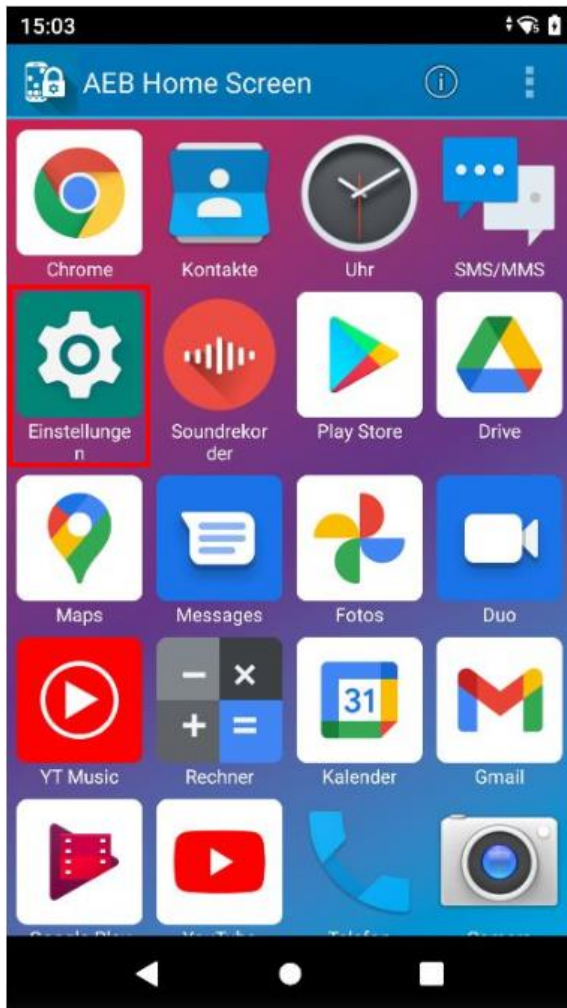


You can optionally check the box to prevent the "Do not show this message again" prompt.

After confirmation with *OK*, click the *Home* button (see 1.3) to display the *Admin* screen mode which shows all applications installed on the device (see 1.6.3).

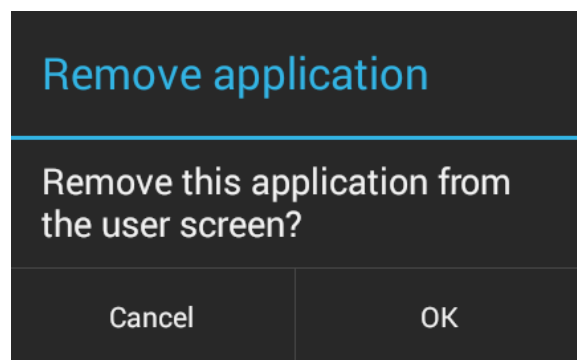
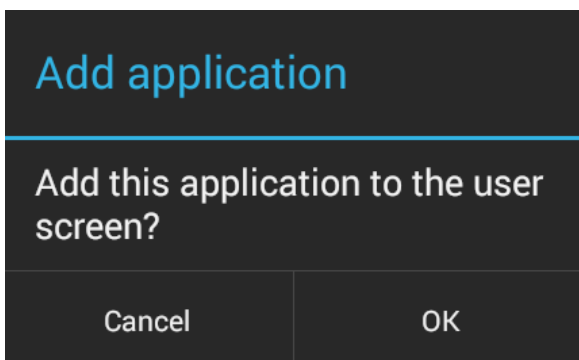
1.6.3 Wireless LAN

Select the *WLAN* option in the settings and select the network you want to connect to.



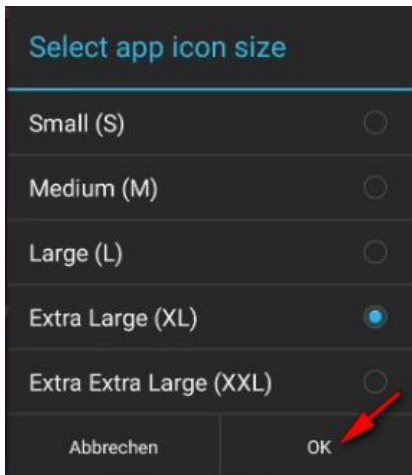
1.6.4 Add or remove applications

If you press and hold a program icon in the Admin Mode, the following messages will be displayed (depending on the status of the application):



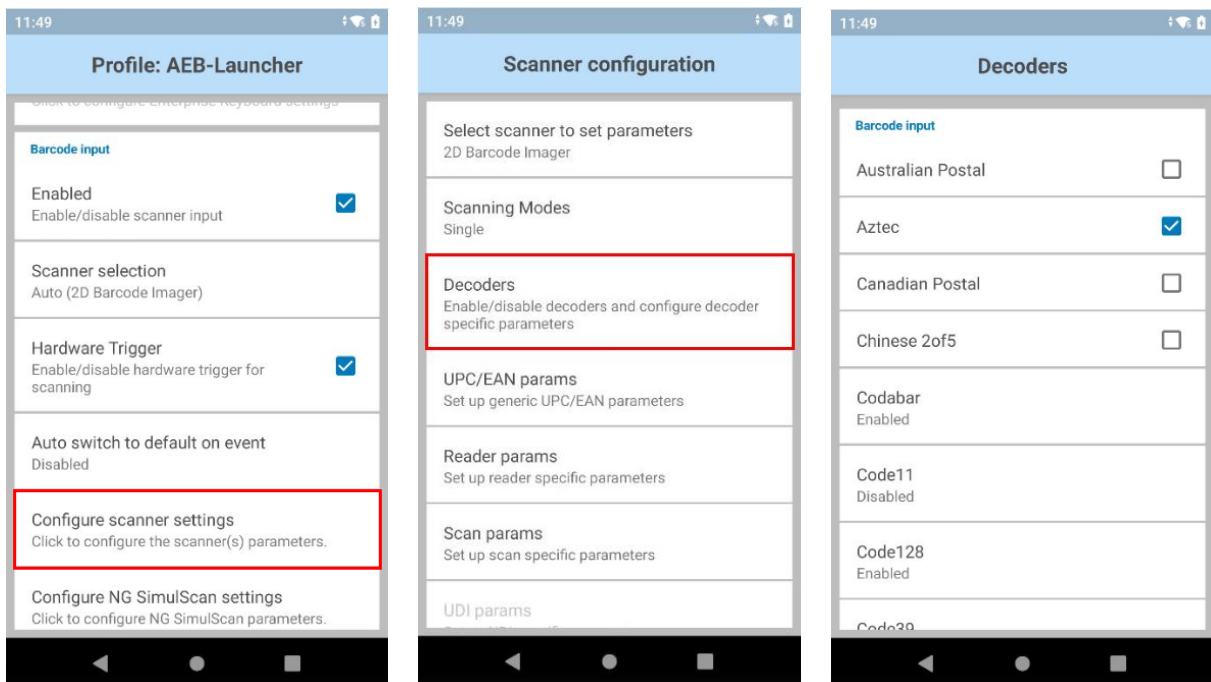
1.6.5 Set icon size

You can change the icon size for your users. Tap on the menu icon, open the *Icon Settings* menu option, and confirm your selection with *OK*.



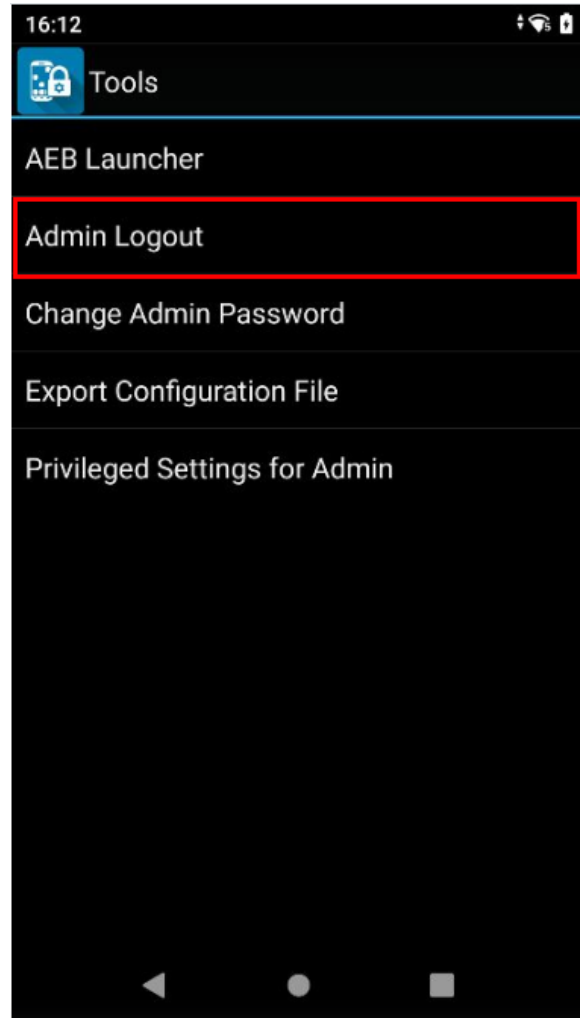
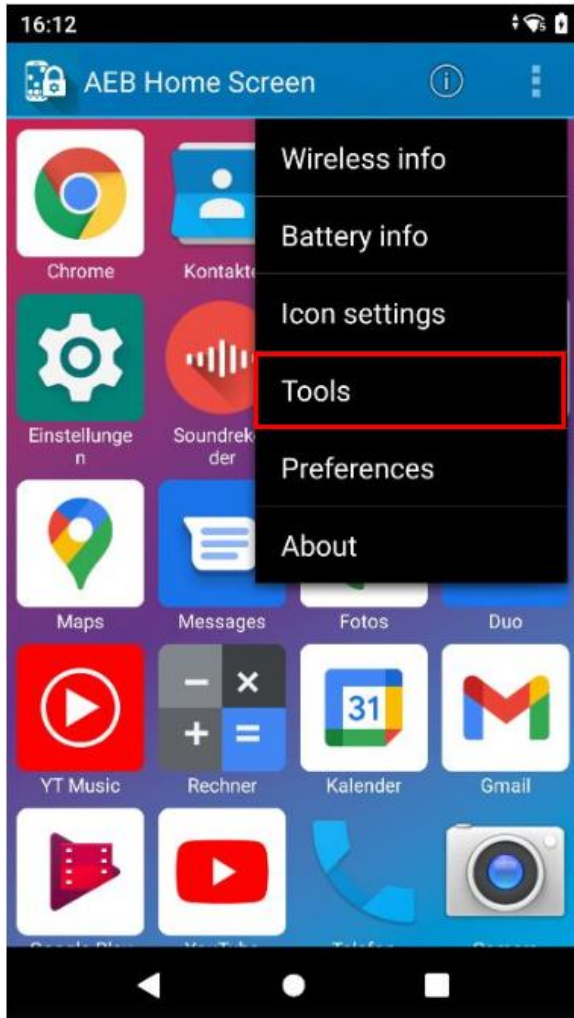
1.6.6 DataWedge

To adapt the existing AEB Launcher DataWedge profile (see 1.2), you must start the DataWedge application in admin mode (see 1.6.1). Under *Configure scanner settings* and then *Decoders*, you can now enable/disable your special barcode type.



1.6.7 Admin logout

To return to the user screen mode, you must exit the admin mode. Select the menu icon again and open the *Tools* menu option. Now select *Admin Logout* and then the *Home* button (see 1.3) to display the user screen mode (see 1.5).



2 AEB Launcher

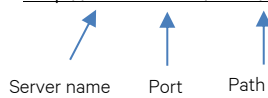
2.1 Add a connection (application URL)

Select *Add application* to specify an ASM connection and enter your password (see 0). Confirm with *OK*. Then you can enter your new connection (application URL) and confirm with *Save*.

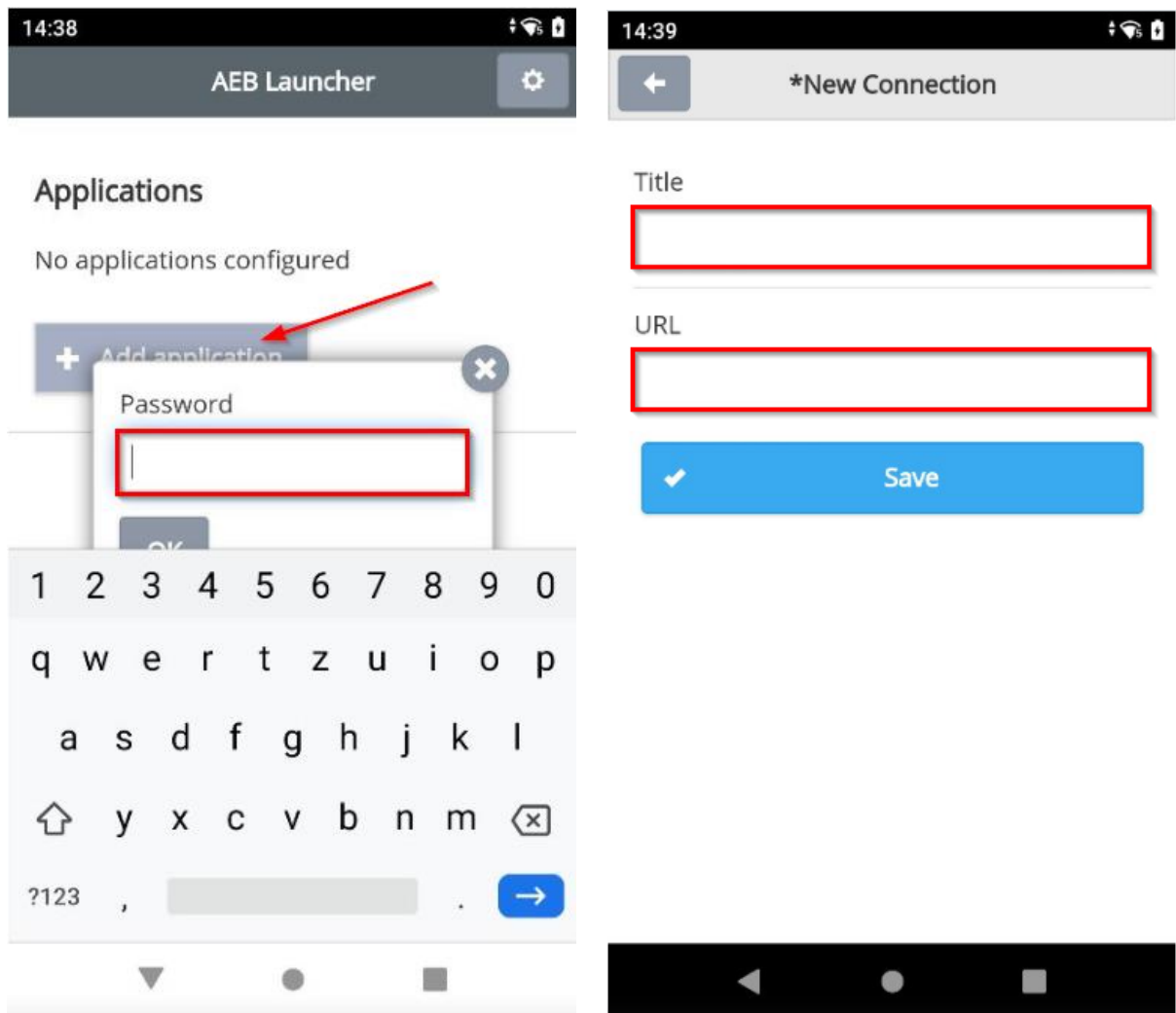
Connection examples (application URL):

Title: AEB

URL: <http://aeb:19080/asm/html/>



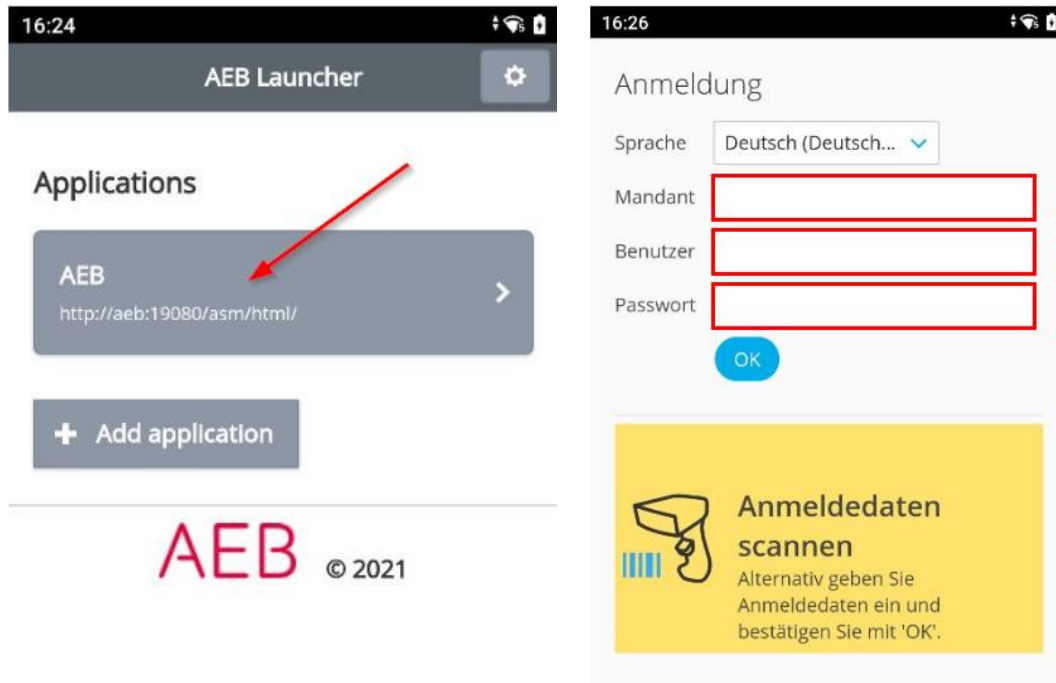
In data center operation, the URL can be reached via `https://`.



2.2 Login

Now you can start the connection (application URL) defined in chapter 2.1.

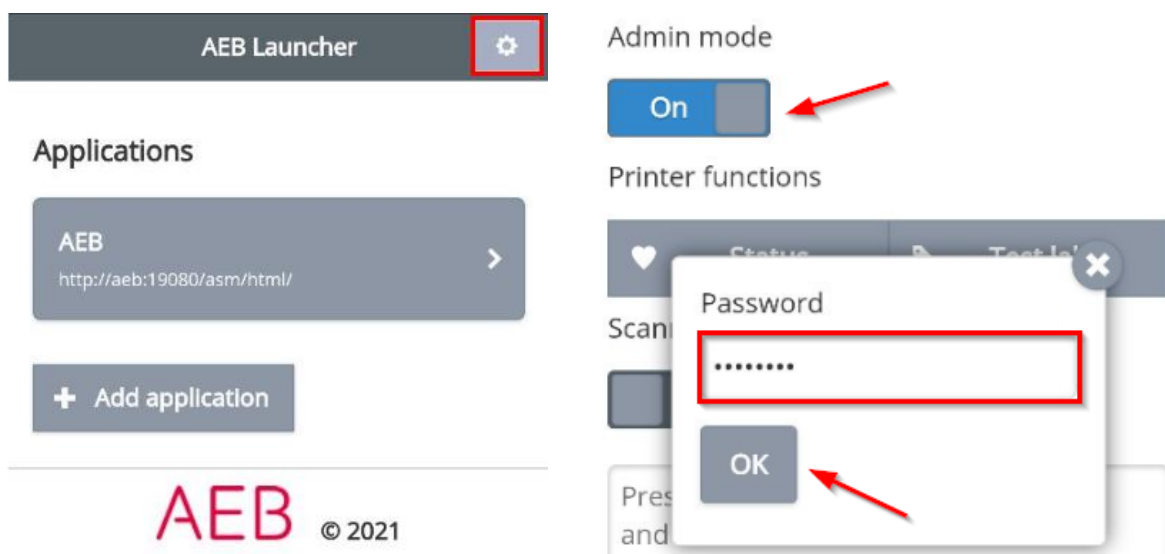
» Make sure that your device is connected to the wireless LAN (see 1.6.3)!



Tip: It is possible for AEB to create a barcode specifically for your login. All relevant login data is stored in the barcode enabling you to simply log in by scanning the barcode.

2.3 Admin mode

In order to change settings in the AEB Launcher, you must enable the admin mode. Enter your password (see 1.5) and confirm your entry with OK.

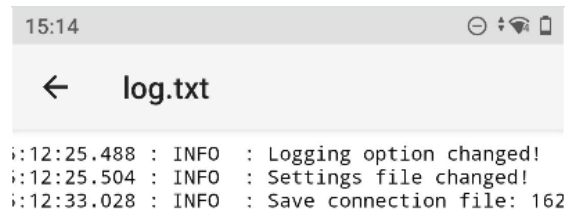
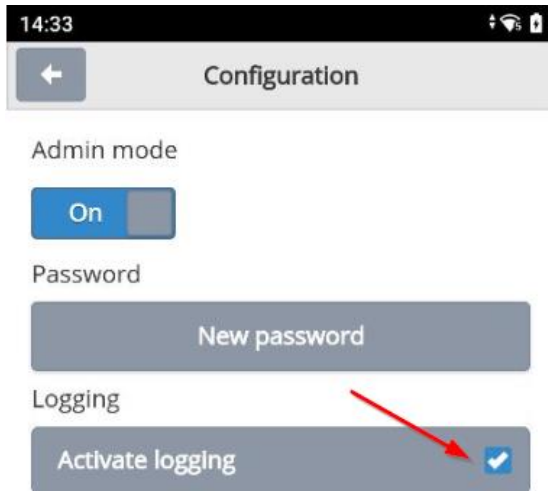


2.3.1 Activate logging

Enable logging for analyses or troubleshooting.

You will find the log in the following directory:

`/sdcard/Android/data/en.aeb.xnsg.mclient/files/log.txt`



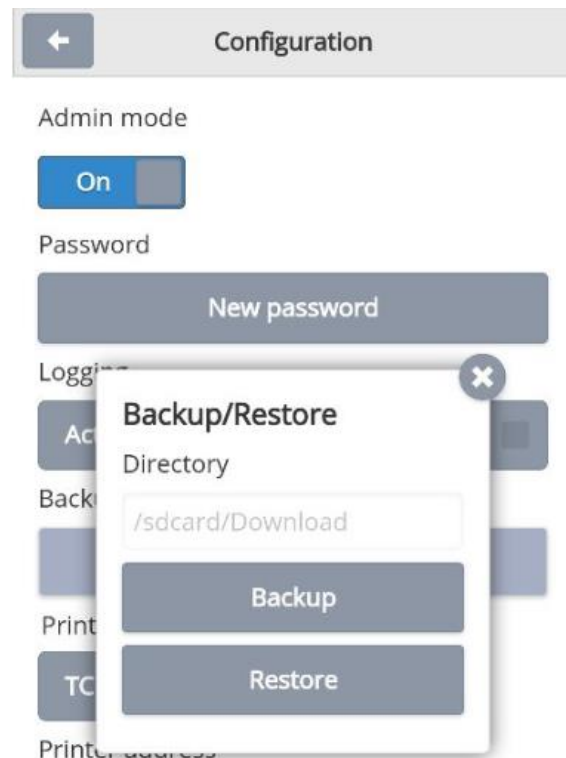
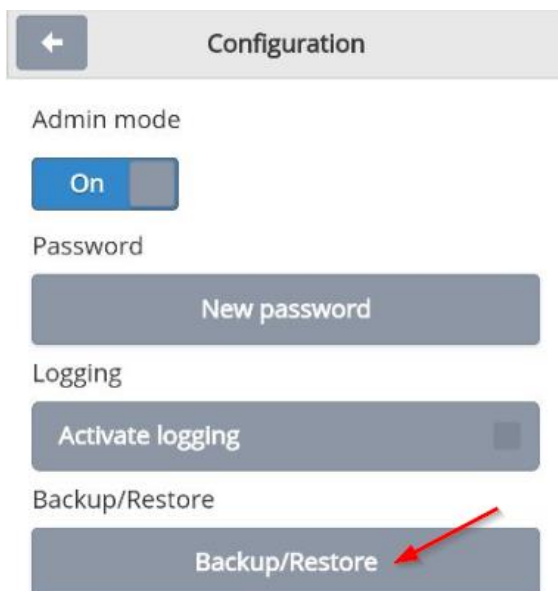
2.3.2 Backup/restore

This option lets you back up/restore your connections (application URLs).

Select either *Backup* to back up the links or *Restore* to restore the links.

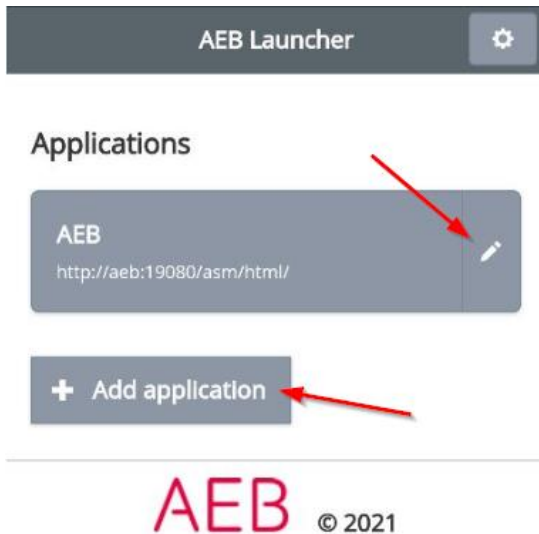
You will find the connection(s) in the following directory:

`/sdcard/Download/xnsg-connections`



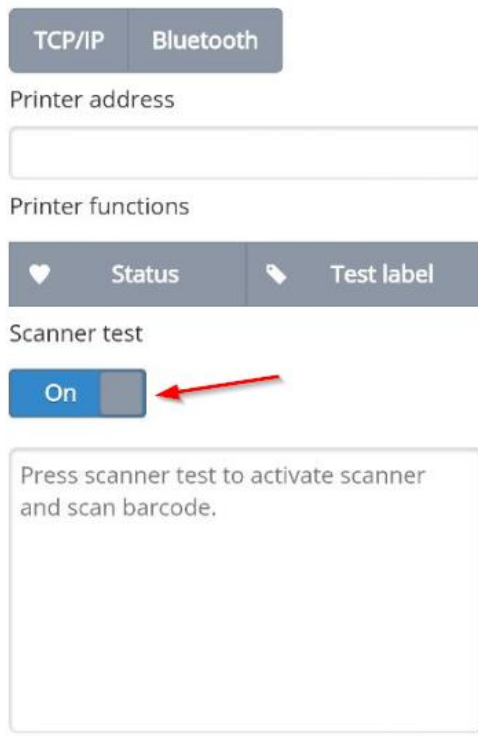
2.3.3 Add or change connection (application URL)

You can subsequently change the connection (application URL) stored in chapter 2.1 or store a new one.



2.3.4 Scanner test

You have the option of performing a scanner test. This may be necessary if you want to test a particular barcode type.



AEB SE . Headquarters Stuttgart . Sigmaringer Straße 109 . 70567 Stuttgart . Germany . T +49 711 72842 0 . www.aeb.com . info@aeb.com . Jurisdiction: Stuttgart .
Registration No. HRB 767 414 . Managing Directors: Matthias Kiess, Markus Meissner

Offices

Düsseldorf . Hamburg . Lübeck . Mainz . Malmö . Munich . New York . Paris . Prague . Rotterdam . Salzburg . Singapore . Soest . Stuttgart . Warwick . Zürich